

# Smoke Vent Range

## Call Points and Switches

### > Product Overview

- EN12101-9 approved, orange coloured MCP indoor call points
- Suitable for use as a manual activation device in smoke control management systems
- Wide range of configurations
- Also available as keyswitches & push buttons



### > Product Benefits

#### Indoor Call Points

Range of conventional indoor call points with glass or resettable elements

MCP1 - Resistor and clean contact electrical model, supplied with resistor and normally open contact

MCP2 - LED indicator as standard with resistor and normally open contact

MCP3 - Normally open & normally closed contact. Single pole changeover achieved with two terminal blocks

MCP4 - Double pole changeover contacts

#### Ancillary Devices

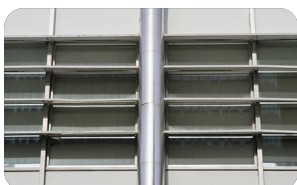
Choice of switching devices for indoor automation and control solutions. Some variants are available for outdoor solutions

Keyswitch Model (9100) - two and three position key options, key trapped or removable in each position

Rockerswitch Model (9200) - two and three positions, momentary or latched mechanisms, and LED indicator version available

Pushbutton Model - miniature (9300) and shrouded (9400) versions. Momentary action or latching

### > Application



# KAC

VENT  
Rev. No.1

## Technical Overview



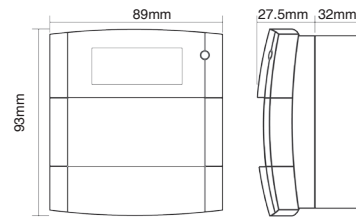
### > MCP

#### Environmental Specification:

Humidity:	93± 3% non condensing
Operating Temperature:	-10°C to +55°C
Storage Temperature:	-10°C to +55°C
Ingress Protection (IP) Rating:	IP24D
For RoHS, WEEE & REACH please visit <a href="http://www.kac.co.uk">www.kac.co.uk</a>	

#### Mechanical Specification:

Material:	PC/ABS
Weight:	130g Flush and 180g Surface



#### For further information see datasheets:

MCP1	MCP2	MCP3	MCP4
------	------	------	------

More colours available for Fire or other applications:  
red, white, blue, yellow, green

## Ancillary Devices Environmental Specification

#### Environmental Specification:

Humidity:	0-95% non-condensing
Operating Temperature:	between -20/25°C to +55/70°C*
Storage Temperature:	between -20/25°C to +55/70°C*
Ingress Protection (IP) Rating:	IP24D
For RoHS, WEEE & REACH please see <a href="http://www.kac.co.uk">www.kac.co.uk</a>	

#### Mechanical Specification

Material:	ABS
Weight:	120g Flush & 180g Surface (approx)

#### \*For further information see datasheets:

Keyswitch	Model 9100
Miniature & Shrouded Pushbutton	Models 9300 & 9400
Rockerswitch	Model 9200

Other colours available:  
red, white, blue, yellow, green



> KAC Alarm Company Ltd  
KAC House, Thornhill Road,  
North Moons Moat, Redditch,  
B98 9ND, United Kingdom  
Tel: +44 (0) 1527 406655  
Fax: +44 (0) 1527 406677  
e-mail: [marketing@kac.co.uk](mailto:marketing@kac.co.uk)

**KAC**